



## 29 Commercial Street, Port Talbot, SA13 3YH Offers Over £90,000

Nestled in the charming village of Abergwynfi, Port Talbot, this delightful terraced house on Commercial Street offers a perfect blend of comfort and scenic beauty. With two spacious reception rooms, this property provides ample space for both relaxation and entertaining. The inviting atmosphere is enhanced by the beautiful views that surround the home, making it a serene retreat from the hustle and bustle of daily life.

The house features three well-proportioned bedrooms, ideal for families or those seeking extra space for guests or a home office. The single bathroom is conveniently located, ensuring practicality for everyday living.

One of the standout features of this property is its proximity to stunning river walks and cycle paths, perfect for outdoor enthusiasts and those who appreciate nature. Whether you enjoy a leisurely stroll along the riverbank or an invigorating bike ride through picturesque landscapes, close to Afan Argoed Country Park, this location caters to an active lifestyle.

This terraced house is not just a home; it is a gateway to a vibrant community and a lifestyle enriched by the natural beauty of the surrounding area. With its appealing layout and prime location, this property is an excellent opportunity for anyone looking to settle in a tranquil yet accessible part of Port Talbot.

To arrange a viewing please call Pennaf Premier on 01639 760033.

## GROUND FLOOR

### ENTRANCE HALLWAY

Entrance via Upvc front door into hallway. Emulsion painted walls, central light, radiator, laminate flooring.



### RECEPTION ROOM ONE

12'8" x 8'11" (3.861 x 2.720)

Upvc double glazed window to front. Emulsion painted walls, central light, radiator, laminate flooring. Fitted shelves to alcoves, cupboard housing gas meter.



### RECEPTION ROOM TWO

13'3" x 11'3" (4.044 x 3.439)

Upvc double glazed window to rear. Emulsion painted walls, central light, radiator, laminate flooring. Shelves fitted in alcoves.



### KITCHEN

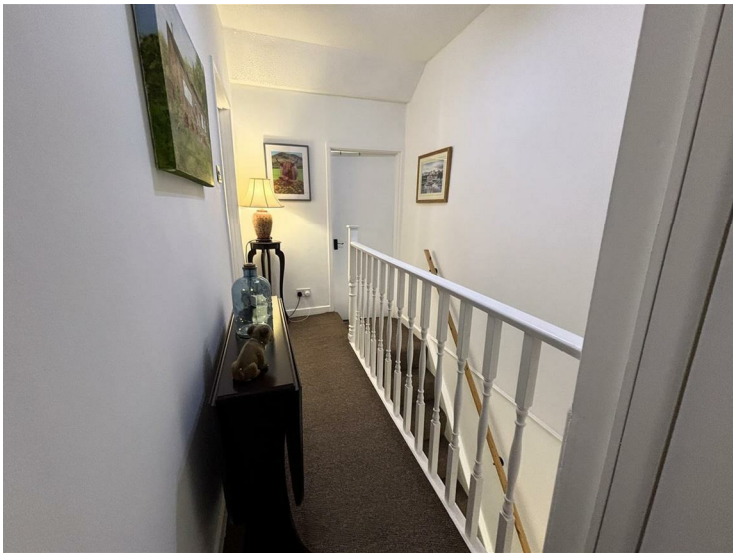
9'7" x 9'2" (2.924 x 2.803)

Upvc double glazed window and door to side with upvc double glazed window to rear. Emulsion painted walls, central light, tiled between units. Range of wall and base units, laminate work surface, stainless steel sink with mixer taps. Freestanding gas cooker, fridge freezer, washing machine. Radiator, laminate flooring.



### STAIRS AND LANDING

Wooden banister with handrail, emulsion painted walls, central light. Large storage cupboard housing 2 year old combination boiler serving domestic hot water and central heating. Access to loft with drop down ladder.



### **BEDROOM ONE**

12'4" x 8'4" (3.780 x 2.541)

Upvc double glazed window to front, emulsion painted walls, central light, radiator, carpet.



### **BEDROOM THREE**

9'5" x 8'6" (2.881 x 2.616)

Upvc double glazed window to side, emulsion painted walls, central light, radiator, carpet.



### **BEDROOM TWO**

9'2" x 9'2" (2.802 x 2.798)

Upvc double glazed window to rear, emulsion painted walls, central light, radiator, carpet.



### **BATHROOM**

10'4" x 6'3" (3.163 x 1.929)

Upvc double glazed window to front. Emulsion painted, half tiled walls and fully tiled over jacuzzi bath, power shower over, low level w.c, vanity wash hand basin, chrome ladder radiator, vinyl tiled flooring.



## EXTERNAL

### FRONT GARDEN

Enclosed front garden with railings to the front, steps and pathway to the front door, low maintenance frontage laid to slate with central and side border.

### REAR GARDEN

Rear garden is laid to lawn with steps leading to paved pathway to the rear, rear gate access to lane, side border, outside tap, stunning views of surrounding mountains.





Energy Efficiency Rating		Current	Potential
<i>Very energy efficient - lower running costs</i>			
(92 plus) A			
(81-91) B			89
(69-80) C			
(55-68) D		68	
(39-54) E			
(21-38) F			
(1-20) G			
<i>Not energy efficient - higher running costs</i>			
<b>England &amp; Wales</b>		EU Directive 2002/91/EC	

These particulars, whilst believed to be accurate are set out as a general outline only for guidance and do not constitute any part of an offer or contract. Intending purchasers should not rely on them as statements of representation of fact, but must satisfy themselves by inspection or otherwise as to their accuracy. No person in this firm's employment has the authority to make or give any representation or warranty in respect of the property.